

# ITALMATIC INTACT® 1200-1

SHEAROGRAPHY TIRE INSPECTION  
PASSENGER CAR / TRUCK TIRES



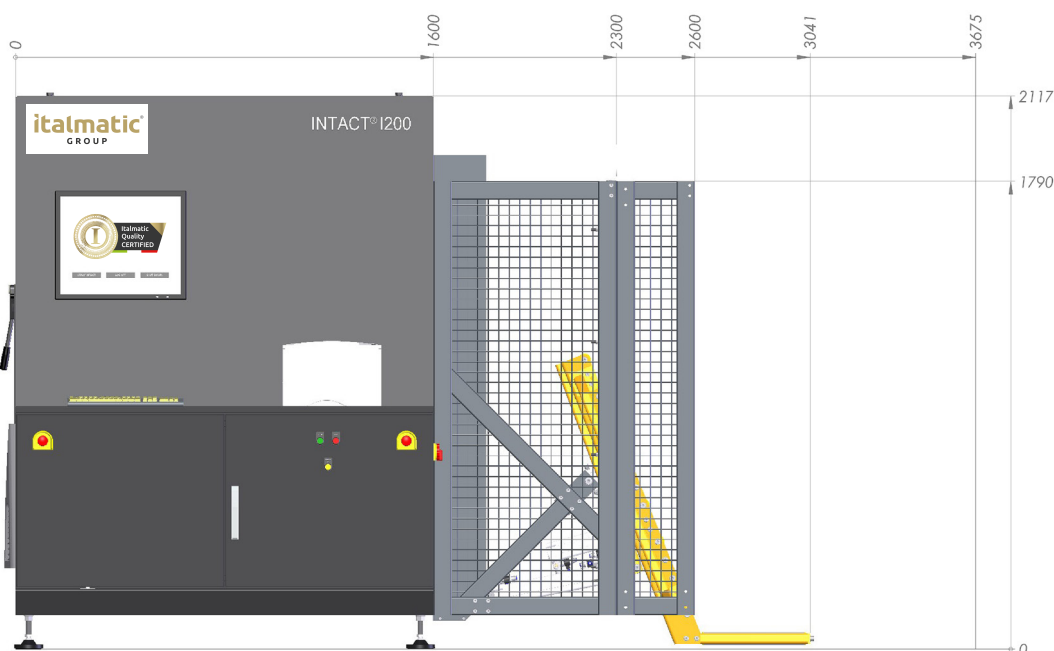
Efficient shearography tire inspection with ITALMATIC INTACT® 1200-1 in retreading, test laboratories and development - for more safety and quality.

**ITALMATIC INTACT 1200-1:  
THE PROVEN ENTRY-LEVEL SYSTEM  
FOR SHEAROGRAPHY TIRE INSPECTION**

The system variant ITALMATIC INTACT 1200-1 offers a wide field of applications especially for the use of retreaders operating with smaller numbers of tires, in test laboratories and for tire development purposes.

The system has a modular design:

The ITALMATIC INTACT 1200-1 configuration can be upgraded to the system variant ITALMATIC INTACT 1200-2 at any time, should further throughput capacity be required. This includes extension with a second door and loading/unloading unit with protective grating. The user thus benefits from the advantages of a higher test cycle speed.



ITALMATIC INTACT 1200-1: Offline system configuration with basic unit, loading/unloading unit and tilt table

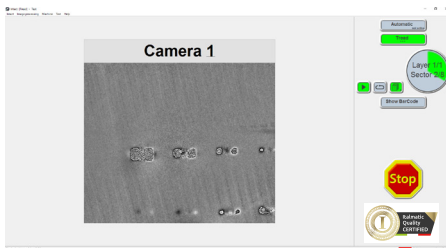
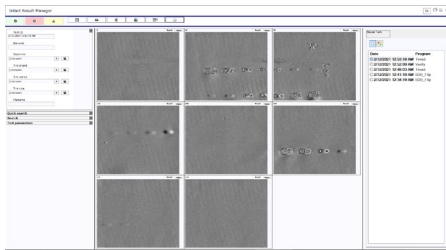
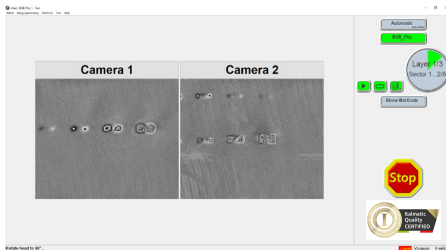


**italmatic®**  
GROUP

# ITALMATIC INTACT® 1200-1

SHEAROGRAPHY TIRE INSPECTION  
PASSENGER CAR / TRUCK TIRES

## TECHNICAL DATA



FEATURES	ITALMATIC INTACT 1200-1
Measuring Heads	1 (option: 2)
Technology	maintenance-free spatial phase shift
Inspection Capacity	bead-to-bead: 9 tires / hour shoulder-to-shoulder: 30 tires / hour
Tire Sizes	13" ID up to 1230 mm OD (bias or radial)
Tire Width	max. 500 mm
Defect Size	1 mm or larger
Defect Type	separations in tread, shoulder, bead and sidewall area
Positioning of Measuring Head	fully automatic due to tire size recognition or by using manually generated settings with collision protection
Display of Results	all tested sections with zoom function
Result Classification	by operator (option: automatic classification)
Storage of Test Results	SQL data base with compressed results (option: other file formats)
Loading	integrated tilt table
Unloading	via loading unit
Transport Direction	from right side
System Diagnosis	automatic system test with integrated verify block
Remote Service	via Internet
Option	inline extension: 2nd door, unloading unit, protective grating
Painting	basic unit: RAL 7016 (grey), moving parts: RAL 1003 (yellow) (option: according to customer specification)
Environmental Conditions	from + 10° C up to + 40° C; difference between tire and ambient temperature max. +/- 10° C
External Connectors	380 - 480 V, 25 A 6 (optional 8) bar, 20 l/min.
Dimensions	3.3 m x 2.2 m x 2.1 m (L x W x H)
Weight	approx. 3,200 kg

ITALMATIC SRL

Via Dell' Artigianato 8/A  
20051 Cassina de Pecchi - MI -  
ITALY  
mail@italmatic.net

[www.italmatic.group](http://www.italmatic.group)



**italmatic**  
GROUP