

# ITALMATIC INTACT® 1200-2

SHEAROGRAPHY TIRE INSPECTION  
PASSENGER CAR / TRUCK TIRES

Efficient shearography tire inspection with  
ITALMATIC INTACT® 1200-2 in tire retreading  
- for more safety and quality.

## ITALMATIC INTACT 1200-2:

### HIGH PERFORMANCE FOR 100 % CONTROL

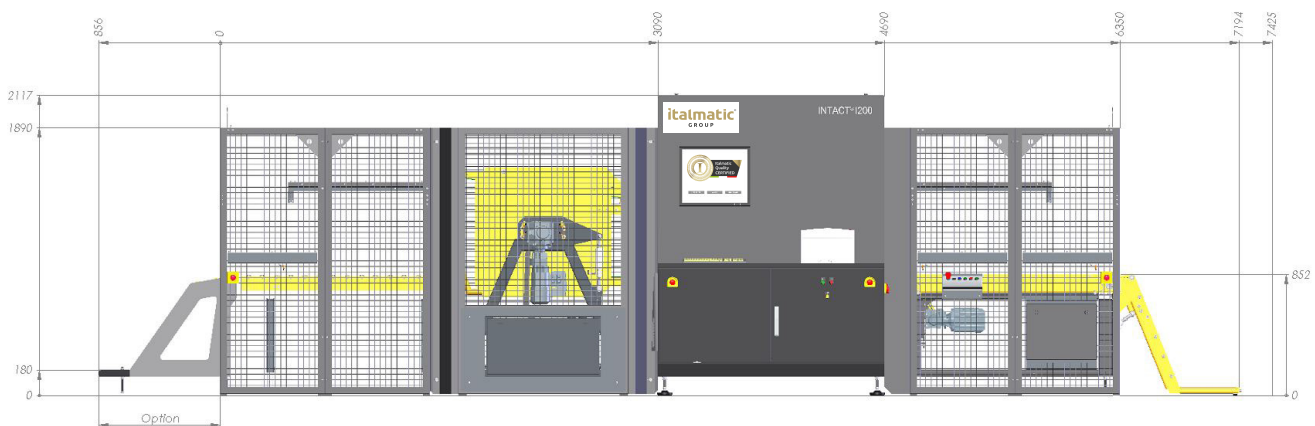
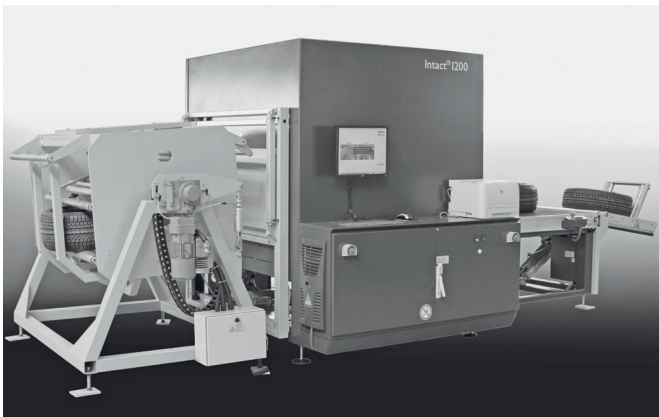
The shearography tire test system ITALMATIC INTACT 1200-2 for passenger, light truck and truck tires has been especially de-veloped for tire manufacturers and retreaders operating with a high daily capacity. Owing to its high efficiency, the ITALMATIC INTACT 1200-2 can be used for a 100 % control.

Due to the short cycle time of only 1 minute which includes the loading/unloading as well as the complete test of the tread and shoulder area of a tire, the system is suitable for testing both the incoming carcasses and the retreaded tires as well as new tires.

### MODULAR SYSTEM DESIGN

#### FOR INDIVIDUAL INTEGRATION

The modular system design of the ITALMATIC INTACT 1200-2 unit allows the integration with customer-specific conveyor systems with buffer belts, branchings and the integration of several ITALMATIC INTACT units for a highly efficient, overall inspection plant.



ITALMATIC INTACT 1200-2: Inline system configuration with basic unit,  
loading unit with conveyor/tilt table, optional tire flipper, drop-off unit

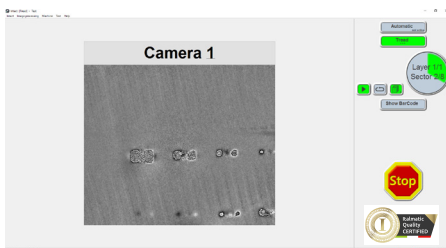
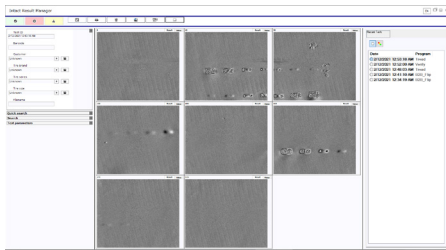
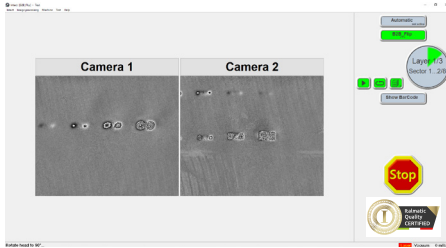


**italmatic**<sup>®</sup>  
GROUP

# ITALMATIC INTACT® 1200-2

SHEAROGRAPHY TIRE INSPECTION  
PASSENGER CAR / TRUCK TIRES

## TECHNICAL DATA



FEATURES	ITALMATIC INTACT 1200-2
Measuring Heads	2
Technology	maintenance-free spatial phase shift
Inspection Capacity	bead-to-bead: 18 tires / hour shoulder-to-shoulder: 60 tires / hour
Tire Sizes	13" ID up to 1230 mm OD (bias or radial)
Tire Width	max. 500 mm
Defect Size	1 mm or larger
Defect Type	separations in tread, shoulder, bead and sidewall area
Positioning of Measuring Head	fully automatic due to tire size recognition or by using manually generated settings with collision protection
Display of Results	all tested sections with zoom function
Result Classification	by operator (option: automatic classification)
Storage of Test Results	SQL data base with compressed results (option: other file formats)
Loading	integrated tilt table (option: integration into existing conveyor system, automatic tire flipper)
Unloading	passive
Transport Direction	from right to left side (option: from left to right side)
System Diagnosis	automatic system test with integrated verify block
Remote Service	via Internet
Painting	basic unit: RAL 7016 (grey), moving parts: RAL 1003 (yellow) (option: according to customer specification)
Environmental Conditions	from + 10° C up to + 40° C; difference between tire and ambient temperature max. +/- 10° C
External Connectors	380 - 480 V, 25 A 6 (optional 8) bar, 20 l/min.
Dimensions	7.0 (8.3) m x 2.2 m x 2.1 m (L x W x H)
Weight	approx. 3,200 kg

**ITALMATIC SRL**

Via Dell' Artigianato 8/A  
20051 Cassina de Pecchi - MI -

ITALY

mail@italmatic.net

[www.italmatic.group](http://www.italmatic.group)



**italmatic**<sup>®</sup>  
GROUP