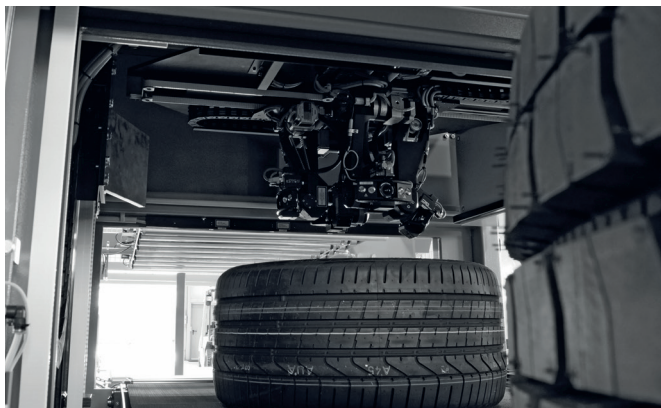


ITALMATIC INTACT® 1200-4

SHEAROGRAPHY TIRE INSPECTION
PASSENGER CAR / TRUCK TIRES



Efficient shearography tire inspection with ITALMATIC INTACT® 1200-4 - for more safety and quality.

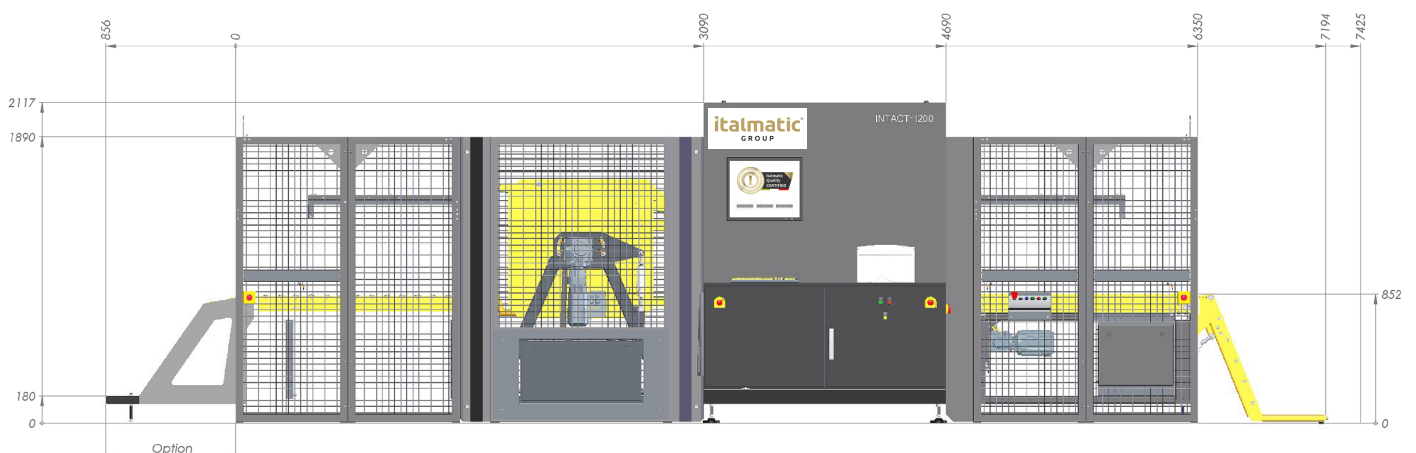
ITALMATIC INTACT 1200-4:

TOP PERFORMANCE FOR 100 % CONTROL

The shearography tire inspection system ITALMATIC INTACT 1200-4 is developed especially for the testing of passenger car and truck tires in new tire manufacturing plants with the highest production output. Including loading and unloading, the cycle time is 36 seconds for the complete inspection of the tire tread and shoulder area. This makes the system ideally suited for the final quality check in tire production.

COMPLETE QUALITY CONTROL

ITALMATIC INTACT 1200-4 is designed for continuous operation and is therefore optimized for the highest production output. Thus, the system facilitates a complete quality inspection for state-of-the-art tire production plants.



ITALMATIC INTACT 1200-4: Inline system configuration with basic unit, loading unit with conveyor/tilt table, optional tire flipper, drop-off unit

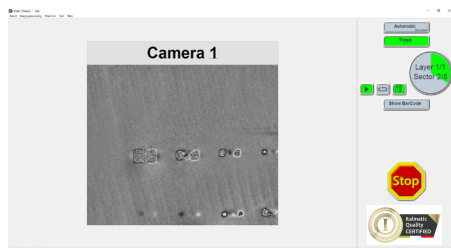
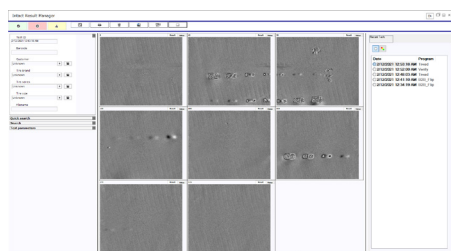
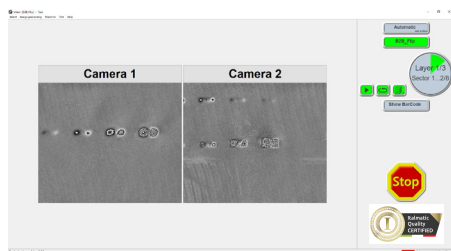


italmatic[®]
GROUP

ITALMATIC INTACT® 1200-4

SHEAROGRAPHY TIRE INSPECTION
PASSENGER CAR / TRUCK TIRES

TECHNICAL DATA



FEATURES	ITALMATIC INTACT 1200-4
Measuring Heads	4
Technology	maintenance-free spatial phase shift
Inspection Capacity	bead-to-bead: 31 tires / hour (+/- 4 %) shoulder-to-shoulder: 100 tires / hour (+/- 4 %)
Tire Sizes	13" ID up to 1230 mm OD (bias or radial)
Tire Width	max. 500 mm
Defect Size	1 mm or larger
Defect Type	separations in tread, shoulder, bead and sidewall area
Positioning of Measuring Head	fully automatic due to tire size recognition or by using manually generated settings with collision protection
Display of Results	all tested sections with zoom function
Result Classification	by operator (option: automatic classification)
Storage of Test Results	SQL data base with compressed results
Loading	integrated tilt table (option: integration into existing conveyor system, automatic tire flipper)
Unloading	passive
Transport Direction	from right to left side (option: from left to right side)
System Diagnosis	automatic system test with integrated verify block
Remote Service	via Internet
Painting	basic unit: RAL 7016 (grey), moving parts: RAL 1003 (yellow) (option: according to customer specification)
Environmental Conditions	from + 10° C up to + 40° C; difference between tire and ambient temperature max. +/- 10° C
External Connectors	380 - 480 V, 25 A 6 (optional 8) bar, 20 l/min.
Dimensions	7.0 (8.3) m x 2.2 m x 2.1 m (L x W x H)
Weight	approx. 3,850 kg

ITALMATIC SRL

Via Dell' Artigianato 8/A
20051 Cassina de Pecchi - MI -
ITALY
mail@italmatic.net

www.italmatic.group



italmatic[®]
GROUP