

ITALMATIC INTACT® 1600

SHEAROGRAPHY TIRE INSPECTION PASSENGER
CAR / TRUCK / EARTH MOVER / OTR / AIRCRAFT
TIRES



Efficient shearography tire inspection with ITALMATIC INTACT® 1600 in retreading - for more safety and quality.

ITALMATIC INTACT 1600-1:

VERSATILE AND RELIABLE QUALITY CONTROL

The shearography tire system INTACT 1600-1 is the most versatile system from ITALMATIC. Featuring an extremely maneuverable single measuring head, it enables a wide variety of tire dimensions to be tested fully automatically.

Thus, ITALMATIC INTACT 1600-1 is especially suitable for the retreading of aircraft tires and has already been installed at well-known international tire companies to guarantee a high safety level in aviation.



ITALMATIC INTACT 1600-2:

FAST SERIAL INSPECTION

The shearography tire test system ITALMATIC INTACT 1600-2 is designed for the serial testing of retreaded or new passenger car, truck, EM, OTR and aircraft tires, as well as for the control of tire carcasses before retreading. With ITALMATIC INTACT 1600-2, tires with an outer diameter of up to 1600 mm can be inspected in the tread and shoulder areas during a short test cycle of just over one minute.



ITALMATIC INTACT 1600-1: System configuration with basic unit, tire flipper, loading unit with tilt table, conveyor/protective fence, drop-off unit with tilt table/rollers

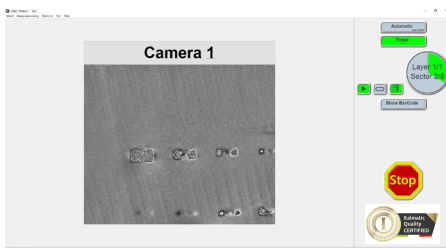
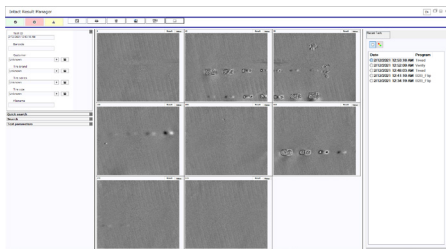


italmatic[®]
GROUP

ITALMATIC INTACT® 1600

SHEAROGRAPHY TIRE INSPECTION
PASSENGER CAR / TRUCK / EARTH MOVER /
OTR / AIRCRAFT TIRES

TECHNICAL DATA



FEATURES	ITALMATIC INTACT 1600-1/-2 STANDARD	OPTIONS
Measuring Heads	1 / 2	
Technology	maintenance-free spatial phase shift	
Inspection Capacity	bead-to-bead: 8 / 16 tires / hour shoulder-to-shoulder: 27 / 57 tires / hour	
Tire Sizes	13" ID; (bias or radial) from 500 up to 1600 mm OD	8" ID; (bias or radial) 450 mm or larger OD
Tire Width	max. 600 mm	
Defect Size	1 mm or larger	
Defect Type	separations in tread, shoulder, bead and sidewall area	
Positioning of Measuring Head	fully automatic, manual	
Display of Results	all tested sections with zoom function	
Result Classification	by operator	fully automatic
Storage of Test Results	SQL data base	other file formats
Loading / Unloading	automatic	interface to existing customer conveyor system, automatic tire flipper
System Diagnosis	automatic system test	additional verify block
Remote Service	yes; via Internet	
Painting	basic unit: RAL 7016 (grey) moving parts: RAL 1003 (yellow)	according to custo- mer specification
Environmental Conditions	+ 10° C bis + 40° C; difference between tire and ambient temperature max. +/- 10° C	
External Connectors	380 - 480 V, 25 A, 6 bar, 20 l/min.	max. 25 A
Dimensions	4.3 (9.7) m x 2.8 m x 2.15 m (LxWxH)	
Weight	approx. 3,450 kg	

ITALMATIC SRL

Via Dell' Artigianato 8/A
20051 Cassina de Pecchi - MI -
ITALY
mail@italmatic.net

www.italmatic.group



italmatic
GROUP